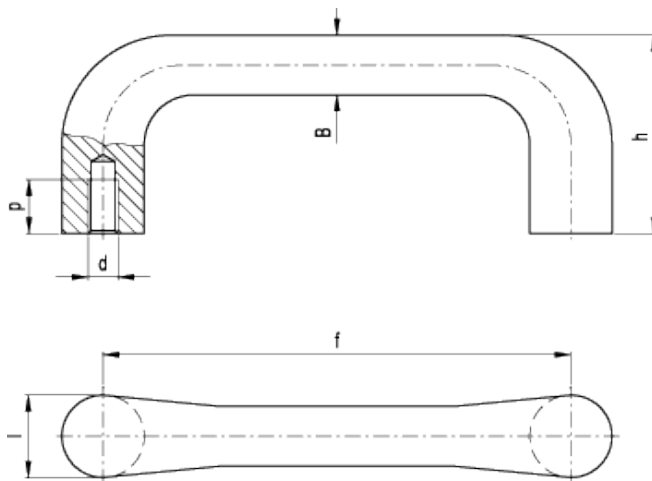


# GN 225

Cabinet "U" handles



## technical informations

### Material

Cast iron GGG.

- Execution BL: blank unfinished casting, fettled.
- Execution SW: RAL 9005 black colour, textured finish, epoxy resin coating.

### Features

Cabinet "U" handles GN 225 are simple, very rugged handles, used for heavy duty applications.

Standard Elements	Main dimensions				Mounting holes		Weight
Description	l	f <sub>±0.5</sub>	h	B	d	p <sub>min</sub>	g
GN 225-18-BL	18	100	42	12	M6	12	196
GN 225-18-SW	18	100	42	12	M6	12	196
GN 225-20-BL	20	112	47	14	M8	15	260
GN 225-20-SW	20	112	47	14	M8	15	260

GN 225-22-BL	22	125	53	16	M10	18	347
GN 225-22-SW	22	125	53	16	M10	18	347
GN 225-25-BL	25	140	59	18	M12	20	513
GN 225-25-SW	25	140	59	18	M12	20	513

---



STANDARD MACHINE ELEMENTS WORLDWIDE